

# Green Enterprise Development Sustainable Environmental Business Management

## Five “sustainable” questions:

1. How can managing your company’s energy and wastes increase your profitability?
2. Are additional revenue streams available to your company in “green markets”?
3. How does waste from your company affect your community?
4. How is your company viewed with regard to green initiatives?
5. Can you identify and quantify your company “waste streams” related to—

Water  
Air  
Solids  
Toxicity (Chemicals)  
Energy ?

Offered by MEP Utah  
in partnership with:



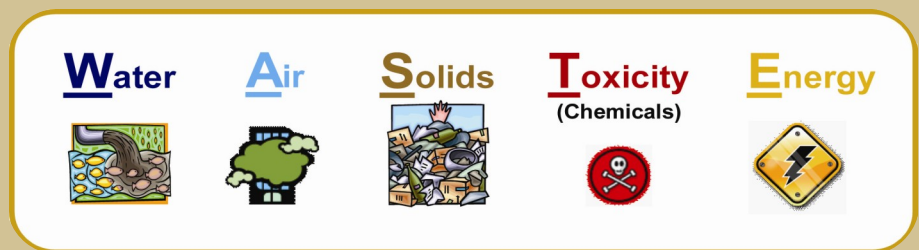
*This 8-module training course is designed for impact!*

**Objective:** *Develop employees that will continuously and consistently identify opportunities to increase profitability by eliminating the costs associated with environmental waste streams and position the company to compete in a ‘green’ economy.*

## Triple Bottom-Line Impact

<u>Profit</u>	<u>People</u>	<u>Planet</u>
<ul style="list-style-type: none"> <li>• Improves efficiency &amp; lowers costs</li> <li>• Reduces regulatory compliance</li> <li>• Customer preferred</li> </ul>	<ul style="list-style-type: none"> <li>• More resources and energy become available for others</li> <li>• “Next generations” perspective</li> </ul>	<ul style="list-style-type: none"> <li>• Reduces demand for resources and energy from nature</li> <li>• Reduces waste to nature</li> </ul>

W A S T E



## Event Information

When: Eight-Day Course plus 1 day Review and Exam  
Nov. 15, 22, 29; Dec. 6, 13; Jan. 3, 10, 17, 23  
All classes on Tuesday, 8:00 a.m. - 4:00 p.m.

Where: SLCC Miller Campus  
9750 South 300 West  
Sandy, Utah, 84070

Cost: \$2,000. Call **Custom Fit Training** to determine if your company qualifies for discount pricing.

SLCC Custom Fit Training: 801.957.5293  
Email: customfit@slcc.edu

## Contact Information



Manufacturing  
Extension  
Partnership

Phone: 435.797.3789  
Email: info@mep.org  
Website: www.mep.org

800 W. University Parkway  
Orem, Utah 84058

a NIST | Network  
MEP | Affiliate